



# TECH PACK

NOUR SASSINE

FULL PORTFOLIO ON [WWW.NOURSASSINE.COM](http://WWW.NOURSASSINE.COM)

DATE CREATED: 12.14.16

STYLE NO: FLANEUR TROUSERS

DIVISION:

DATE MODIFIED 12.14.16

MERCH NO: 1

DISCRIPTION: WEAVED VINTAGE JEANS/SILK NECKTIES

FABRICATION:

SEASON: SS17

SAMPLE SIZE: MEN 40

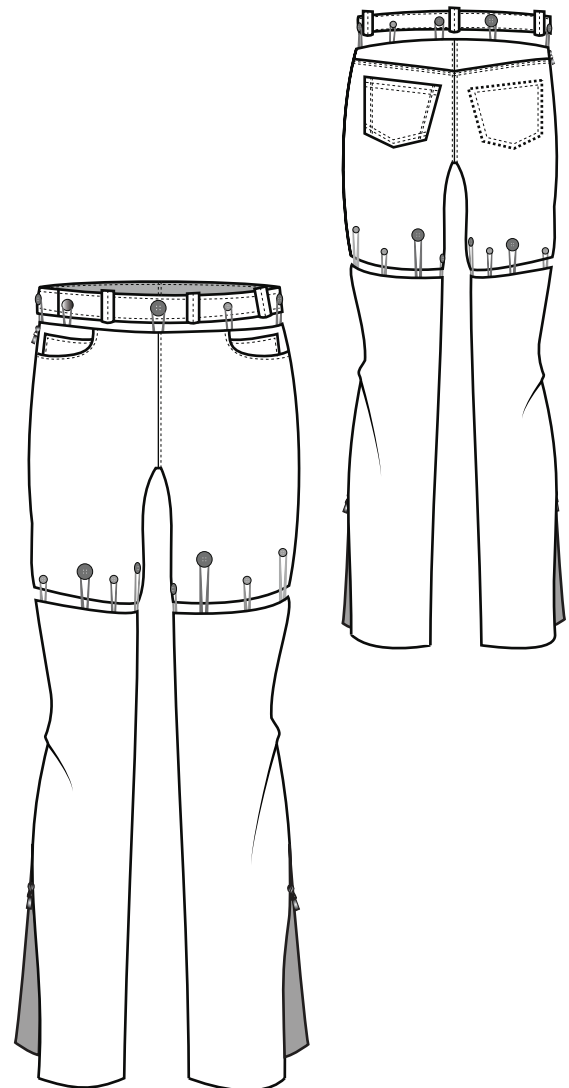
STATUS:

VENDOR:

Comments: WAISTBAND IS SEPERATE FROM GARMENT. OPENING ZIPPER ON RIGHT SIDE. LEG ZIPPERS OUTER SEAM (RIGHT) AND INNER SEAM (LEFT).

ALL IMAGES ON THIS PAGE ARE FOR STYLE REFERENCE ONLY.

## DEVELOPMENT NOTES:

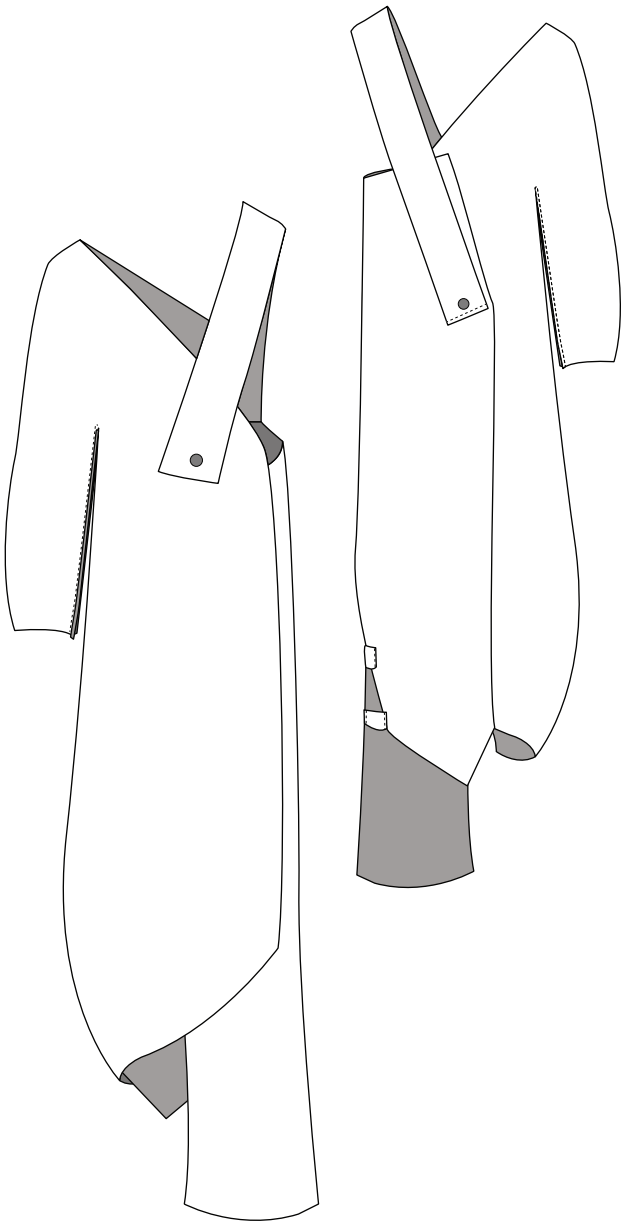


DATE CREATED: 12.14.16	STYLE NO: FLANEUR WRAP OVERALLS	DIVISION: SLEEVE ON RIGHT SIDE.
DATE MODIFIED 12.14.16	MERCH NO: 2	DISCRIPTION: PANT LEG ON LEFT
FABRICATION:	SEASON: SS17	SAMPLE SIZE: MEN'S XL
	STATUS:	VENDOR:

Comments: GARMENT IS WEAVED ON GRAIN BUT DRAPED ON BIAS. IT CANNOT BE TRADITIONALLY GRADED, ITS SIZE DEPENDS ON THE WIDTH OF THE WEAVED SURFACE.

ALL IMAGES ON THIS PAGE ARE FOR STYLE REFERENCE ONLY.

DEVELOPMENT NOTES:



DATE CREATED: 11.15.16  
DATE MODIFIED 11.16.16  
FABRICATION:

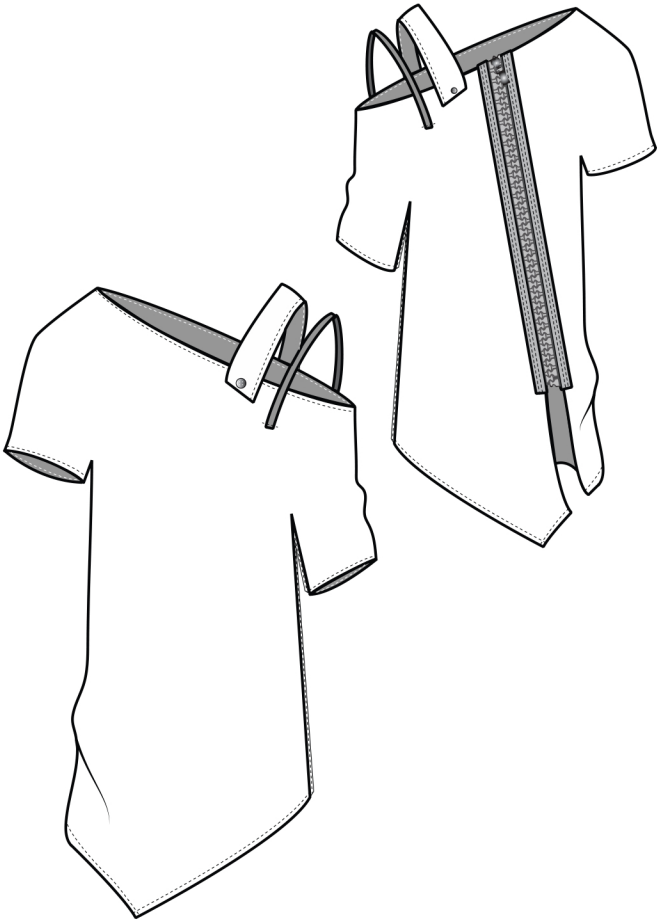
STYLE NO: REALISTE STRIPED DENIM  
MERCH NO:3<sup>TOP</sup>  
SEASON: SS17  
STATUS:

DIVISION:  
DISCRIPTION:  
SAMPLE SIZE: MEN'S M  
VENDOR:

Comments: STRAP IS ADJUSTABLE WITH BUTTONS ON THE FRONT AND BACK. CAN BE WORN AS TOP WITH ZIPPER IN THE BACK, OR AS AN OVER-PIECE WITH THE ZIPPER IN THE FRONT (ALTERNATIVE STYLING).

ALL IMAGES ON THIS PAGE ARE FOR STYLE REFERENCE ONLY.

DEVELOPMENT NOTES:





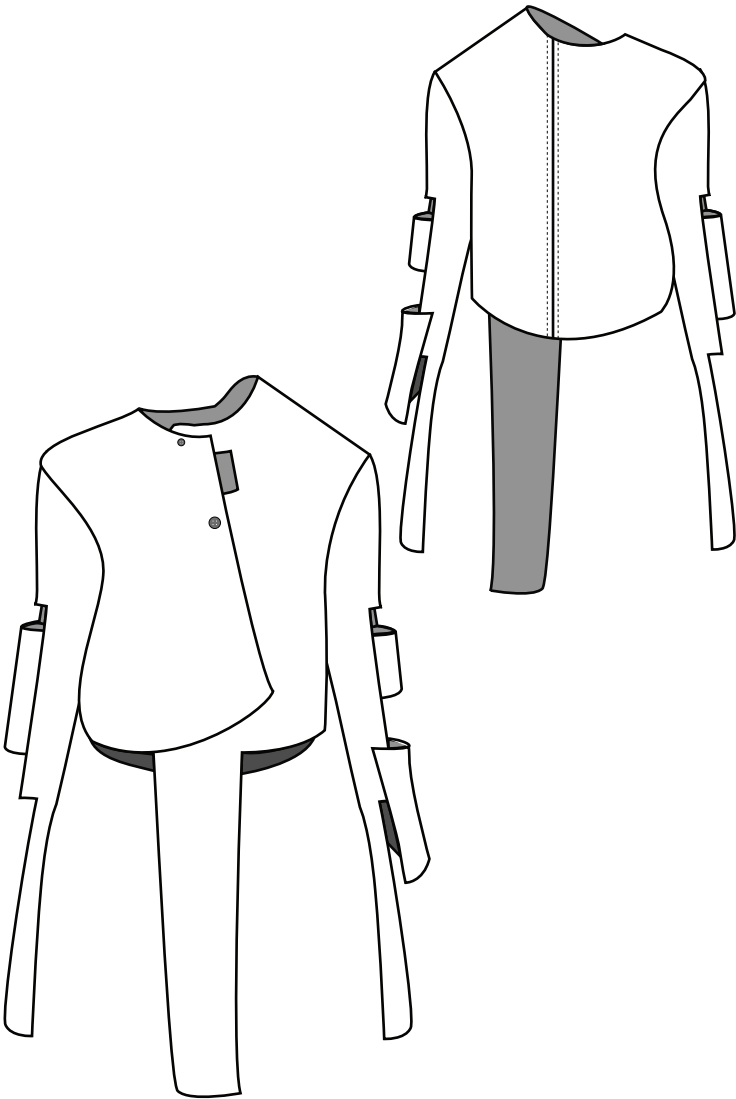
DATE CREATED: 12.14.16  
DATE MODIFIED 12.14.16  
FABRICATION:

STYLE NO: FLANEUR FRAMED TOP  
MERCH NO: 4  
SEASON: SS17  
STATUS:

DIVISION:  
DISCRIPTION:  
SAMPLE SIZE: MEN'S L  
VENDOR:

Comments: THIS GARMENT IS WEAVED WITH FRAMES SHAPED LIKE PATTERN PIECES. THE OPENINGS ARE THE TWO BUTTONS ON THE CENTRE FRONT,THE SLEEVES HAVE OPEN SEGMENTS SO THEY CAN BE WORN IN ALTERNATE FASHIONS.  
ALL IMAGES ON THIS PAGE ARE FOR STYLE REFERENCE ONLY.

DEVELOPMENT NOTES:



DATE CREATED: 12.14.16	STYLE NO: FLANEUR BERMUDA	DIVISION:
DATE MODIFIED 12.14.16	MERCH NO: 5	DISCRIPTION:
FABRICATION:	SEASON: SS17	SAMPLE SIZE: MEN'S 40
	STATUS:	VENDOR:

Comments: "FLANEUR TROUSERS" WITHOUT THE REMOVABLE LEG PIECES. THE UNDER PARTS ARE TAKEN OUT WITH THE BUTTONS, AND ARE PACKED SEPERATELY.

ALL IMAGES ON THIS PAGE ARE FOR STYLE REFERENCE ONLY.

DEVELOPMENT NOTES:

